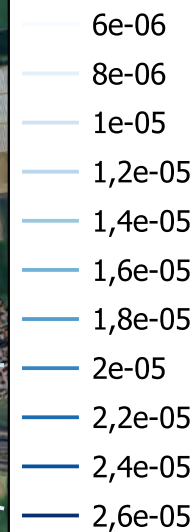


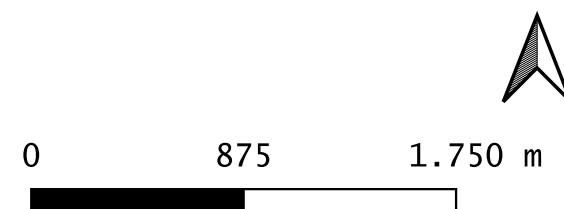
LEGENDA

Ricaduta Media Annuale $\mu\text{g}/\text{m}^3$



 Confini Aziendali

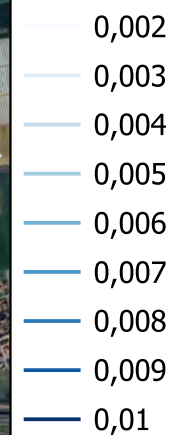
 Recettori



Boro (B)
STATO DI PROGETTO

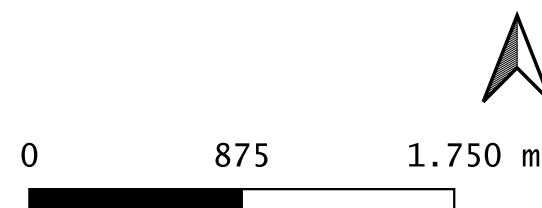
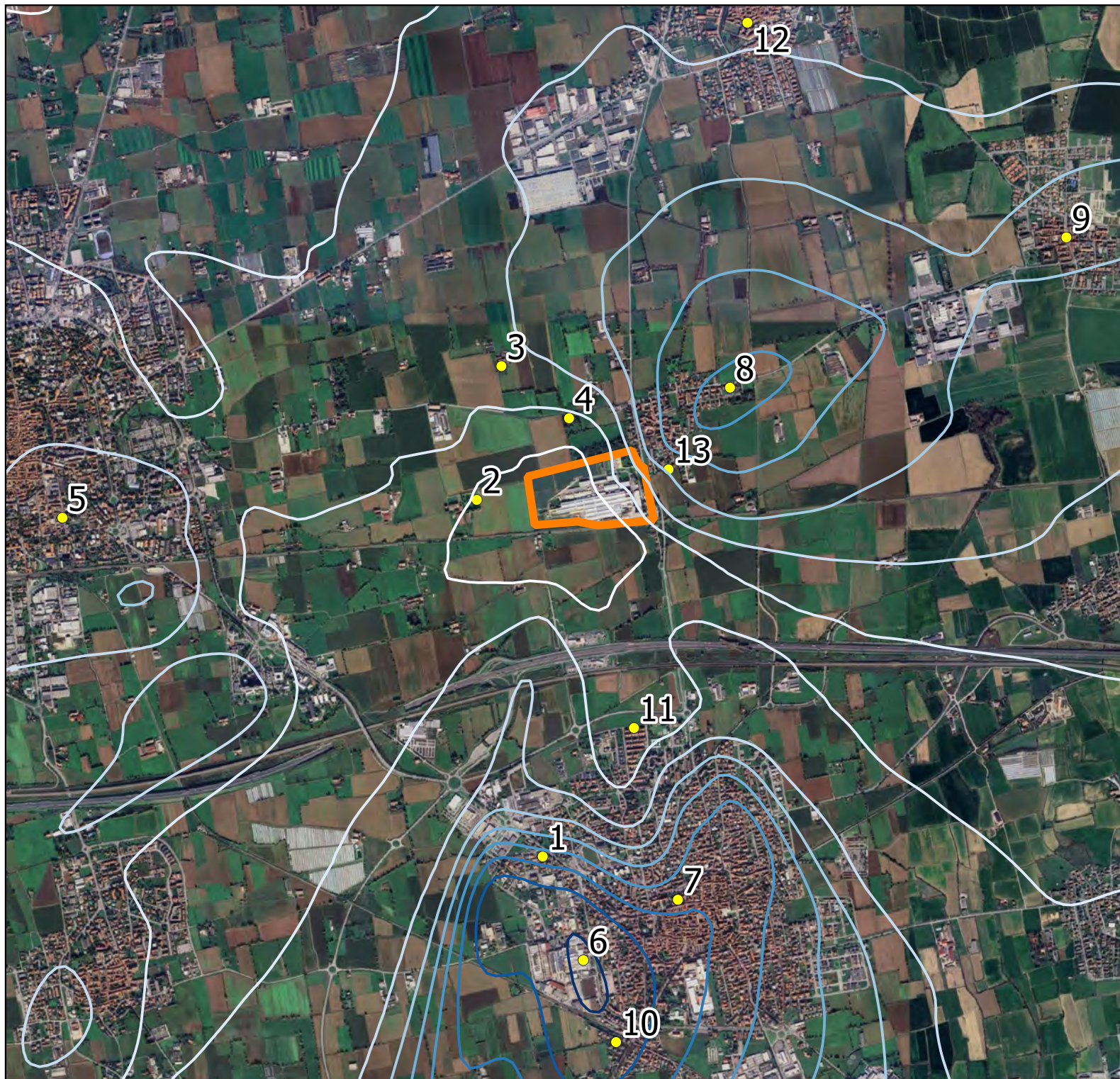
LEGENDA

Ricaduta Media Annuale $\mu\text{g}/\text{m}^3$



 Confini Aziendali

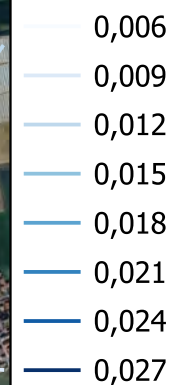
 Recettori



Formaldeide (CH₂O)
STATO DI PROGETTO

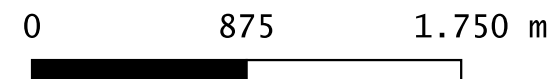
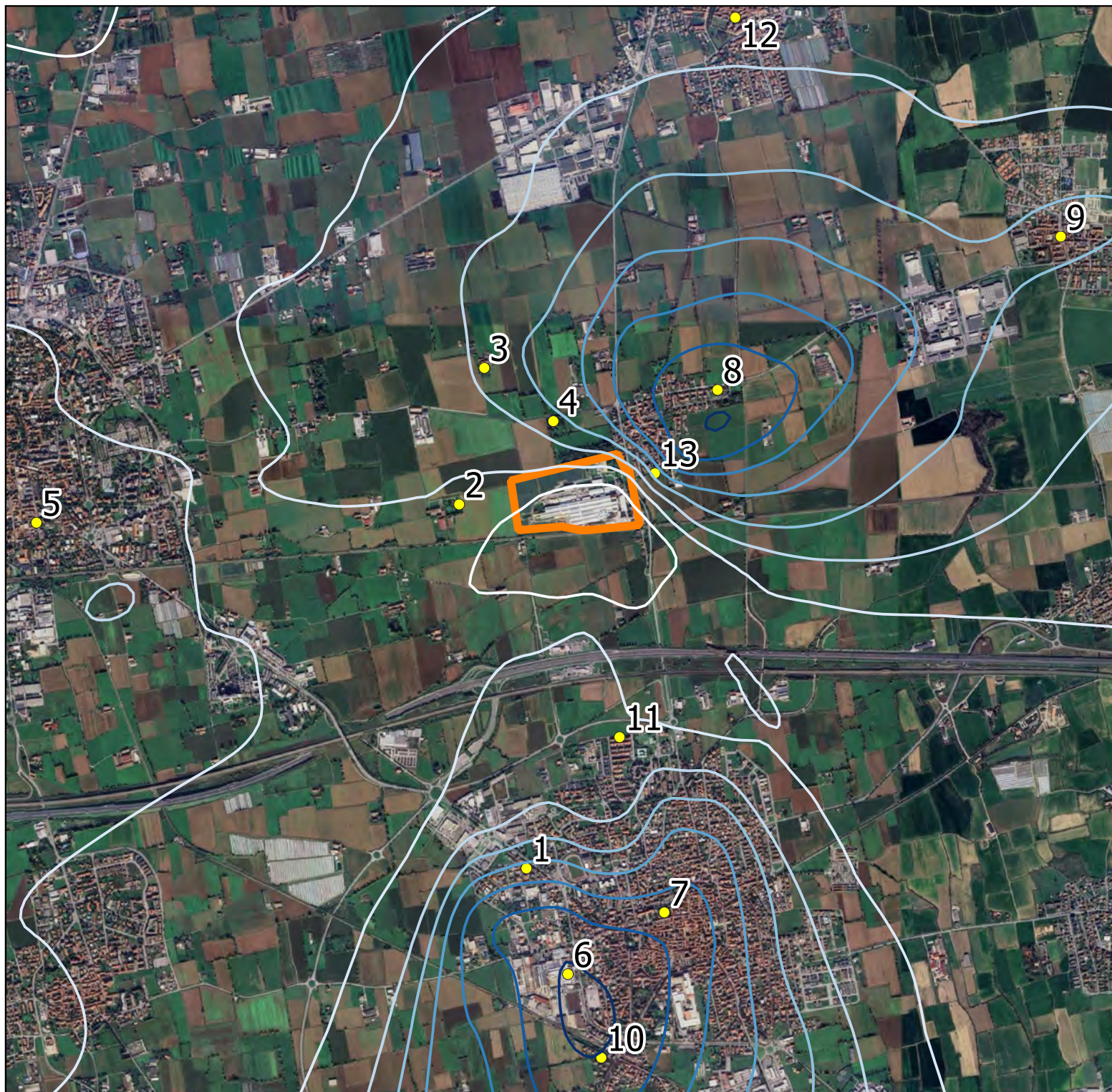
LEGENDA

Ricaduta Media Annuale $\mu\text{g}/\text{m}^3$



 Confini Aziendali

 Recettori



LEGENDA

Ricaduta Media Annuale $\mu\text{g}/\text{m}^3$

- 0,04
- 0,06
- 0,08
- 0,1
- 0,12
- 0,14
- 0,16
- 0,18

 Confini Aziendali

 Recettori



Acido Cloridrico (HCL)
STATO DI PROGETTO

LEGENDA

Ricaduta Media Annuale $\mu\text{g}/\text{m}^3$

0,005

0,007

0,009

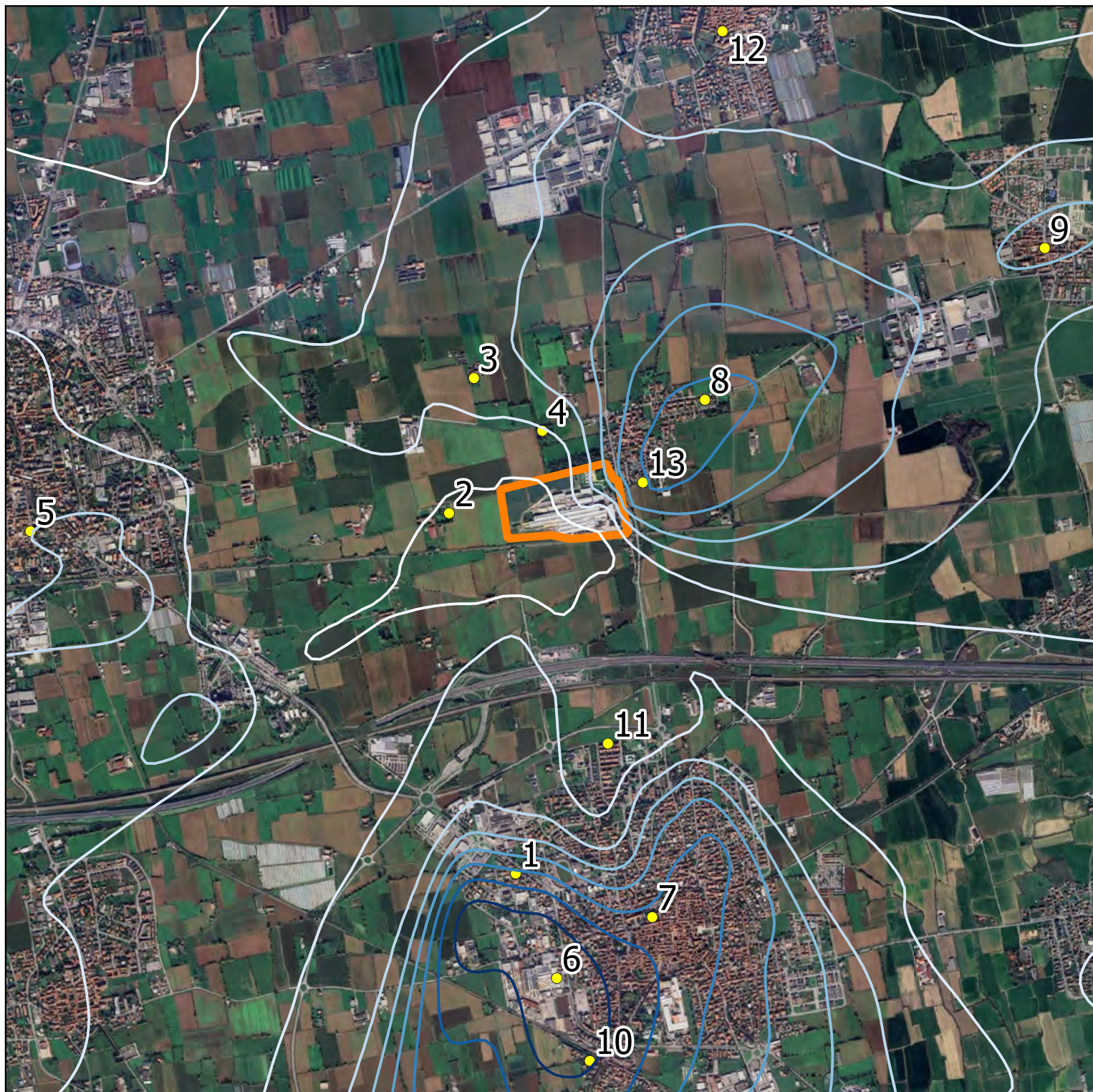
0,011

0,013

0,015

0,017

0,019

 Confini Aziendali Recettori

0 875 1.750 m

LEGENDA

Ricaduta Media Annuale $\mu\text{g}/\text{m}^3$

0,002

0,0035

0,0045

0,0055

0,0065

0,0075

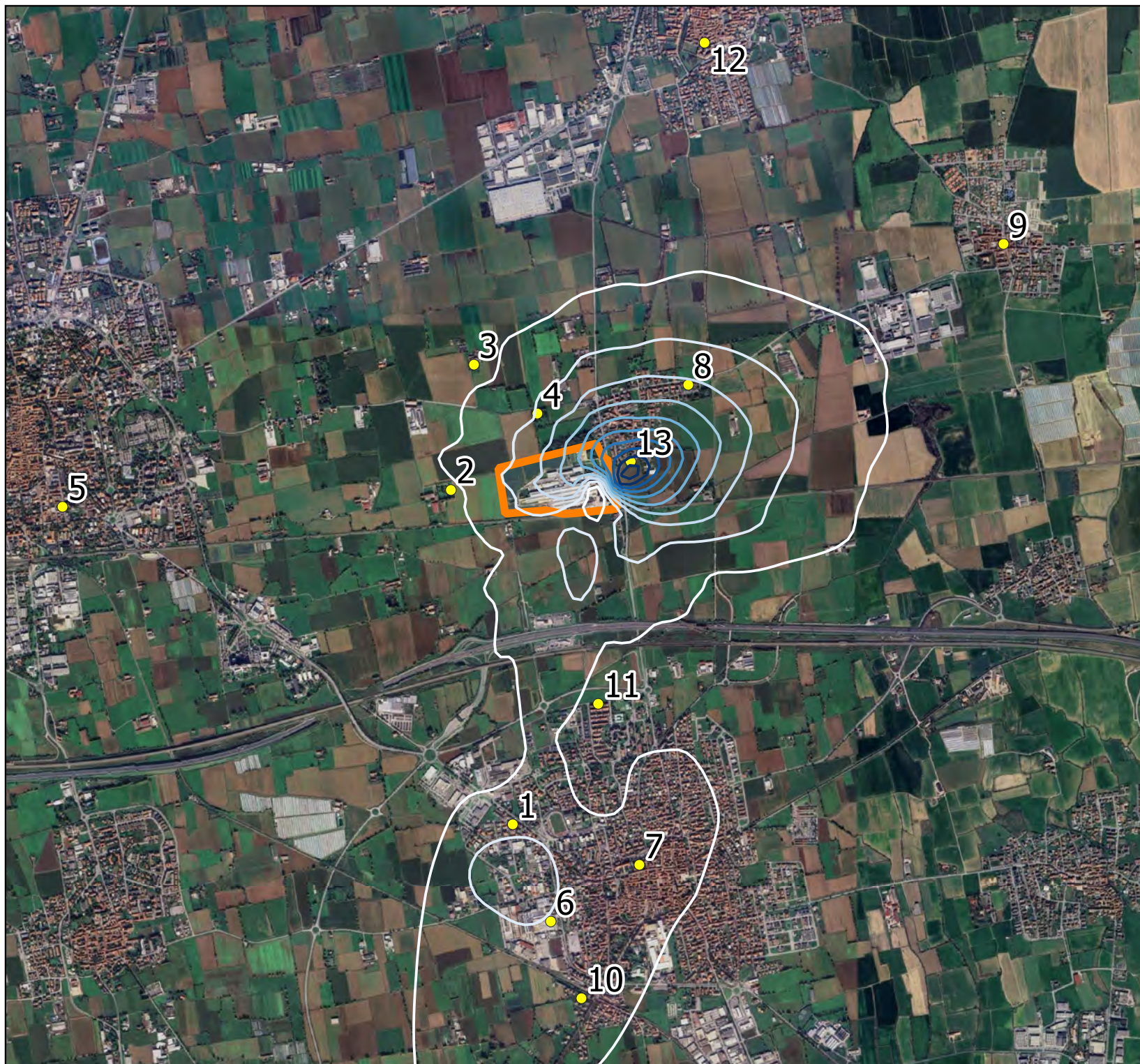
0,0085

0,0095


0,011

 Confini Aziendali

 Recettori



0 875 1.750 m



LEGENDA

Ricaduta Media Annuale $\mu\text{g}/\text{m}^3$

Sb, Pb, CrIII, Cu, Mn, V, Sn

0,00055

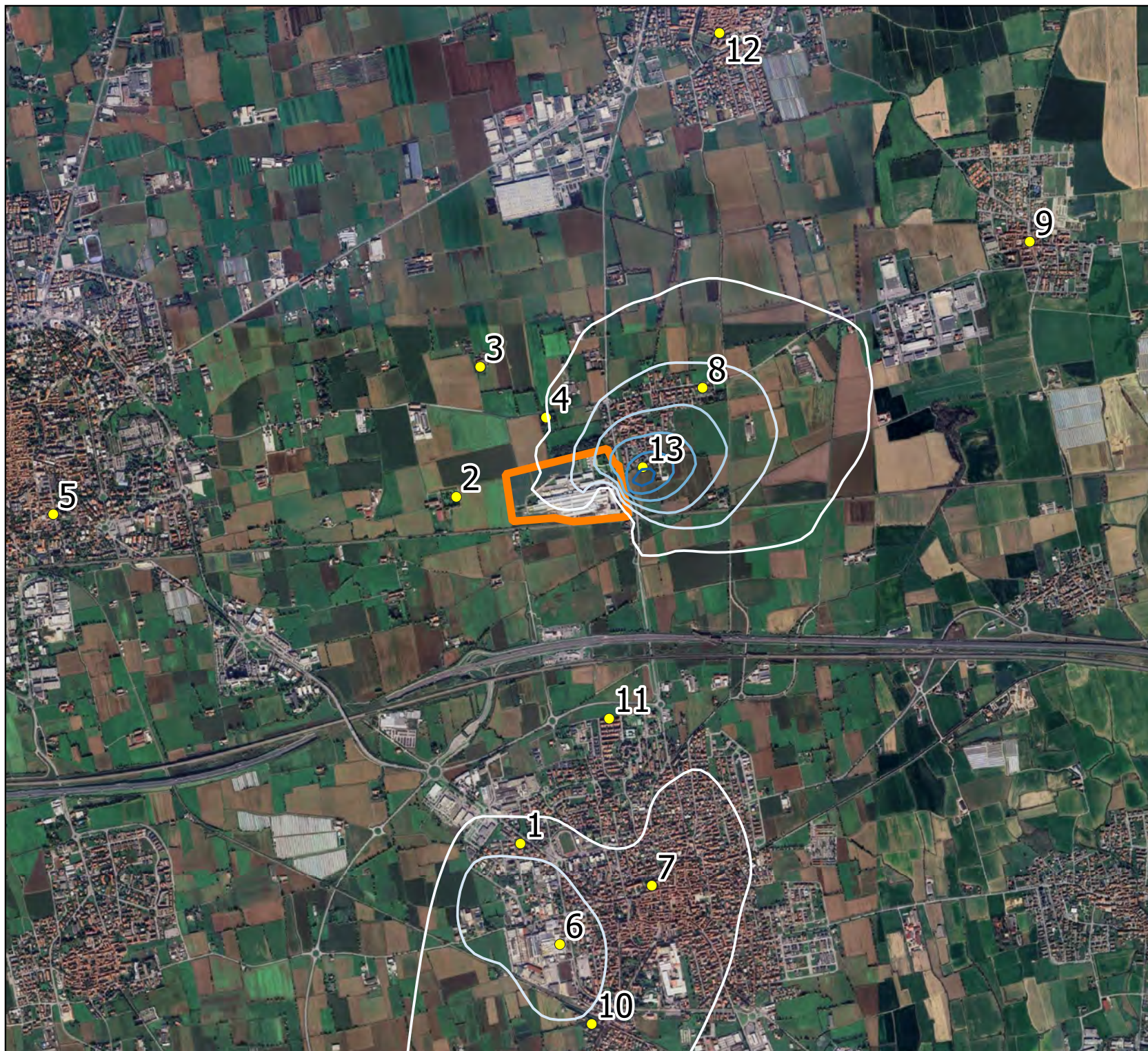
0,00075

0,00095

0,0011

0,0014

0,0015

 Confini Aziendali Recettori

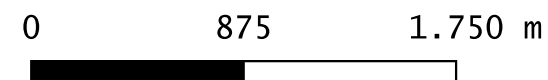
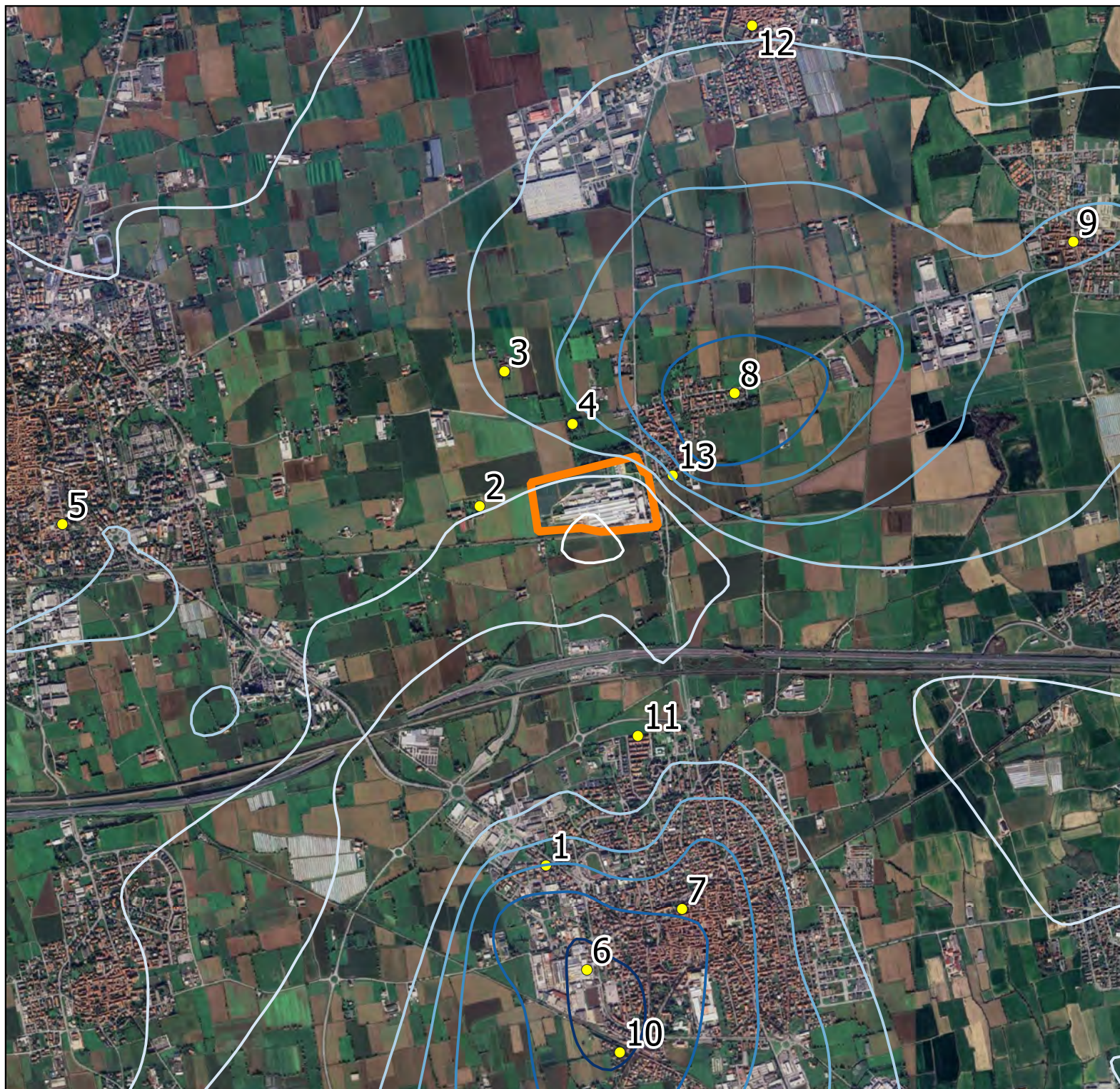
0 750 1.500 m

AMMONIACA (NH₃)
STATO DI PROGETTO

LEGENDA

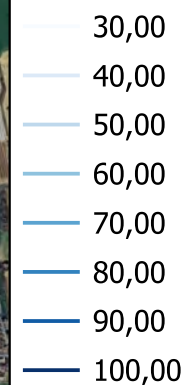
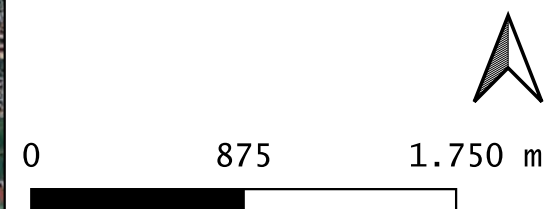
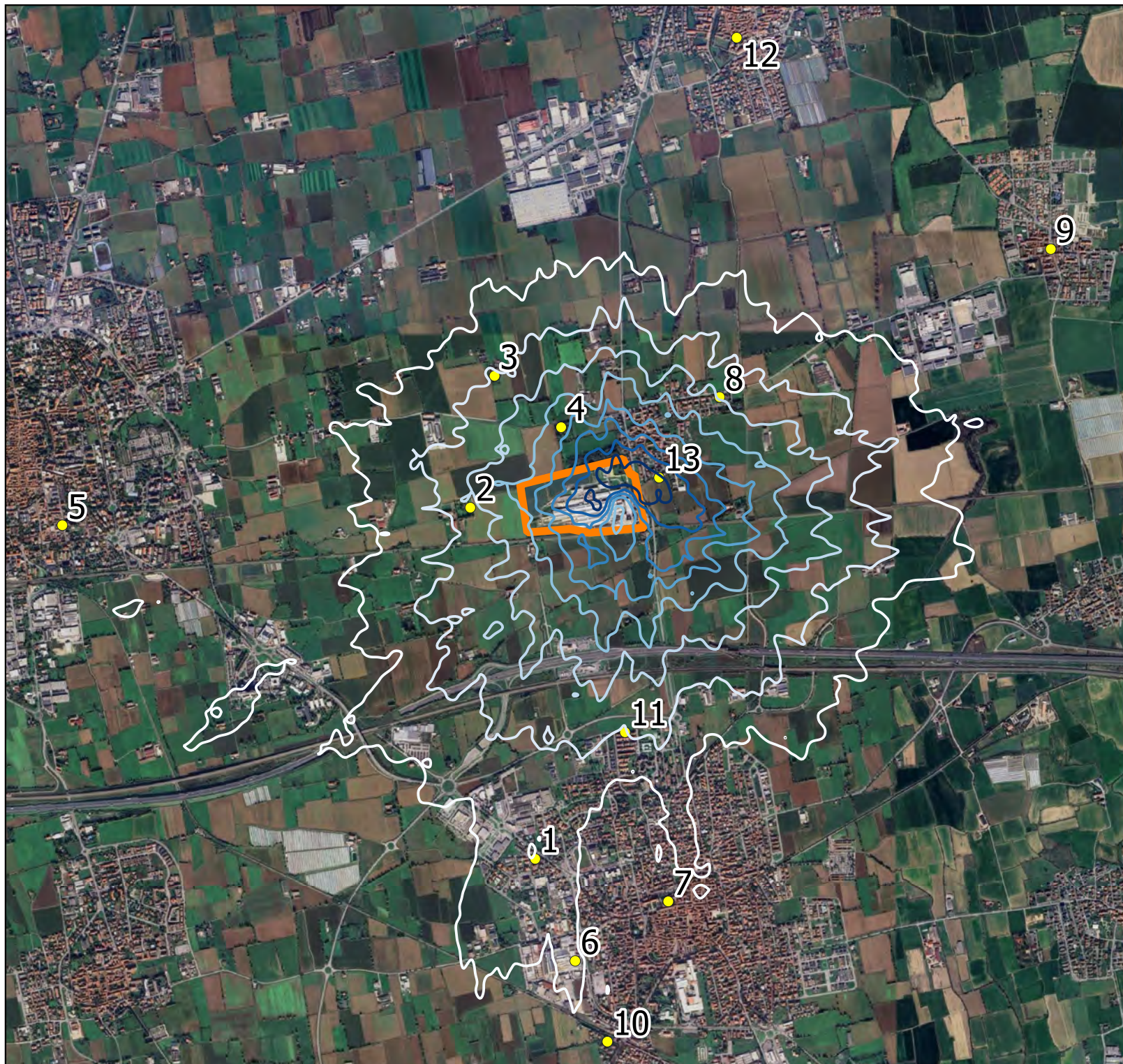
Ricaduta Media Annuale $\mu\text{g}/\text{m}^3$

- 0,05
- 0,1
- 0,15
- 0,2
- 0,25
- 0,3
- 0,35

 Confini Aziendali Recettori

BIOSSIDO DI AZOTO (NO₂)
STATO DI PROGETTO

LEGENDA

Ricaduta 99.79 Percentile µg/m³ Confini Aziendali Recettori

Biossido di Azoto (NO₂)
STATO DI PROGETTO

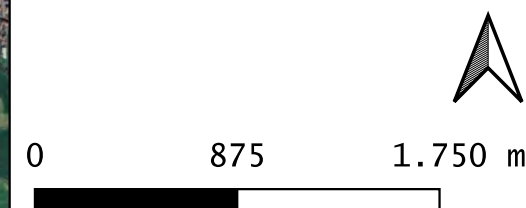
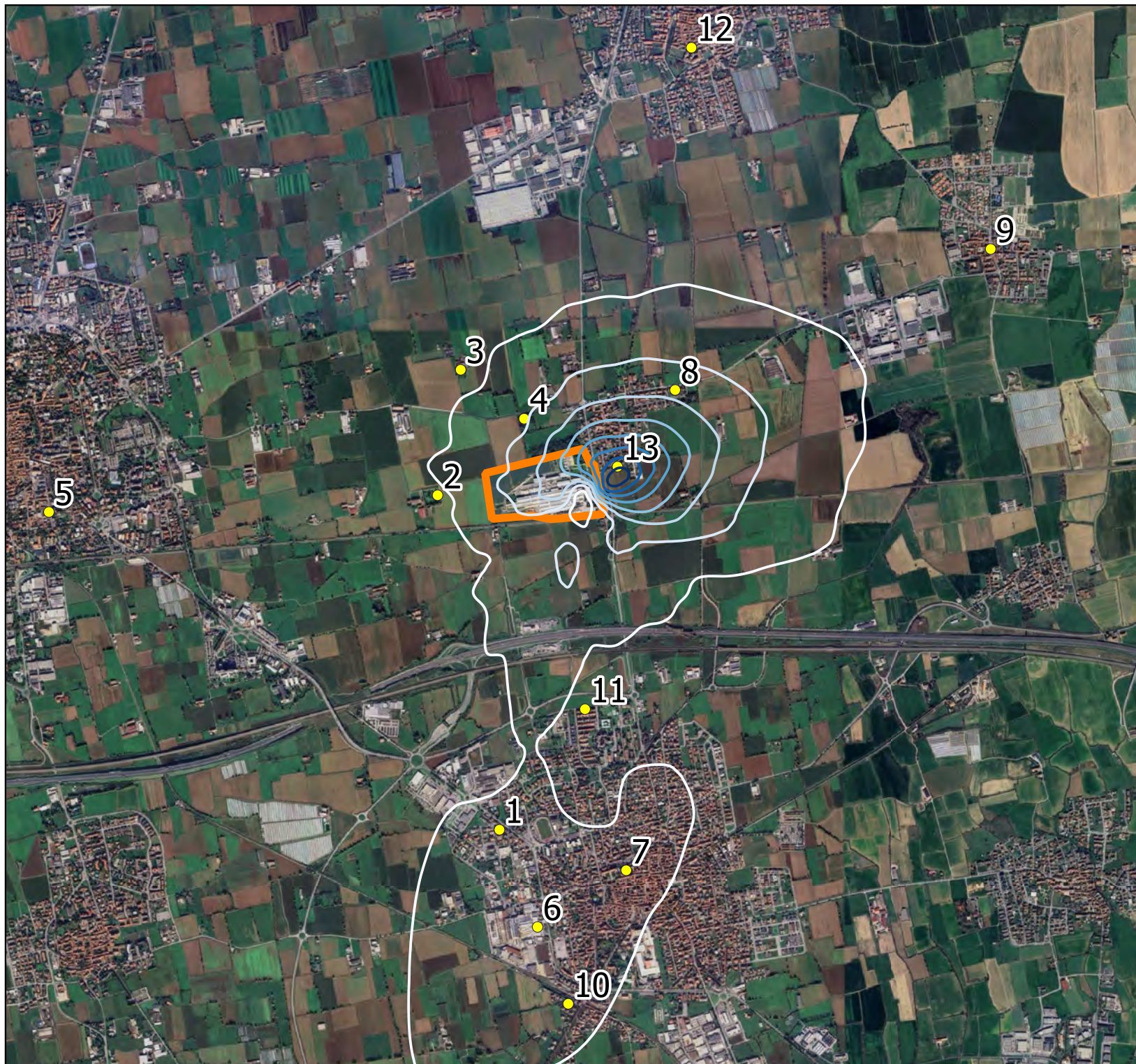
LEGENDA

Ricaduta Media Annuale $\mu\text{g}/\text{m}^3$



Confini Aziendali

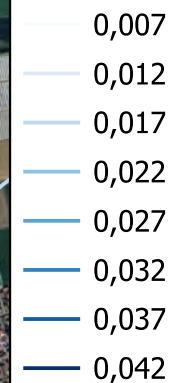
Recettori



FENOLO (PhOH)
STATO DI PROGETTO

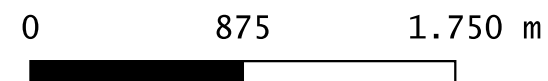
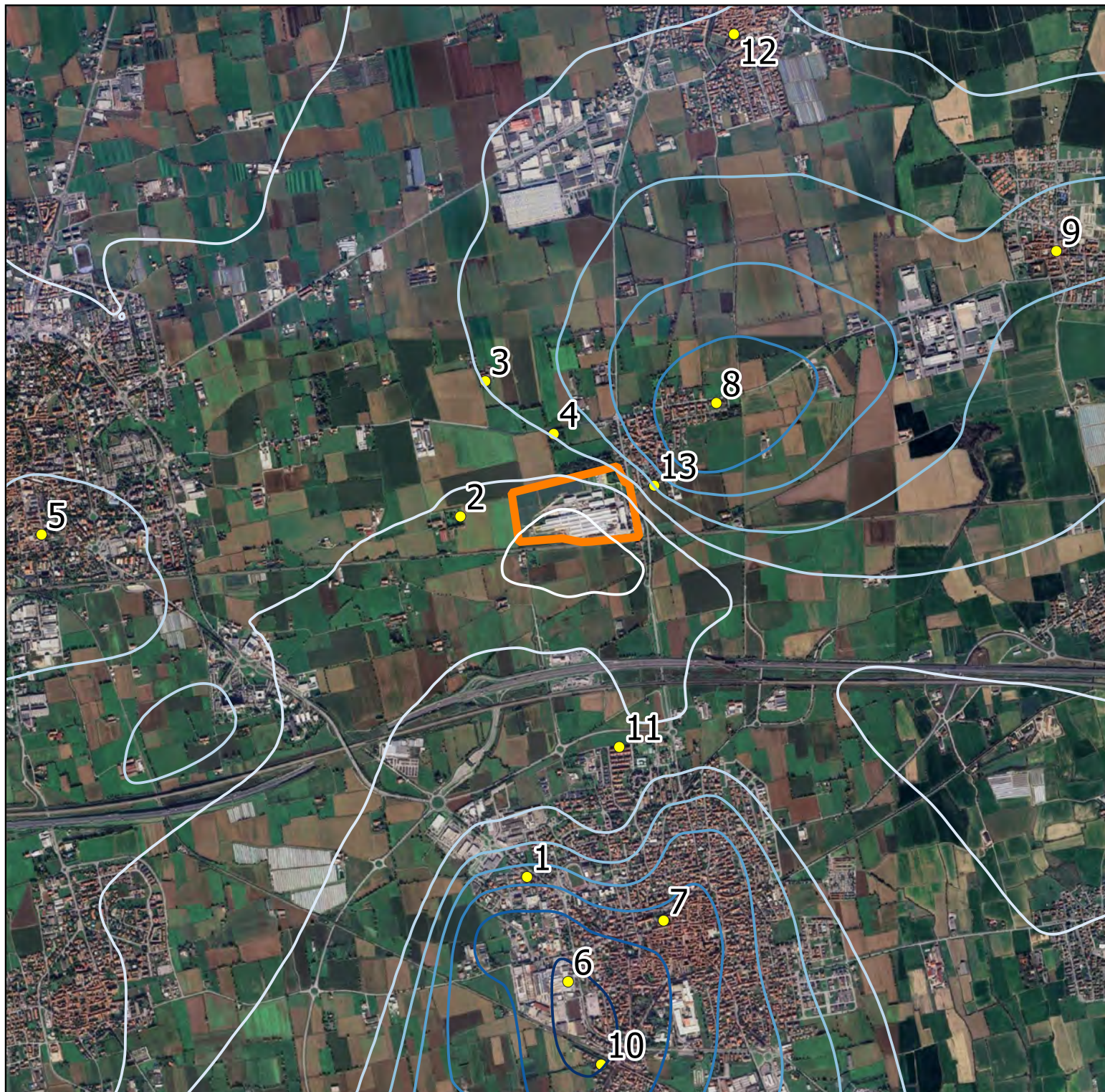
LEGENDA

Ricaduta Media Annuale $\mu\text{g}/\text{m}^3$



Confini Aziendali

Recettori



POLVERI TOTALI (PM_x)
STATO DI PROGETTO

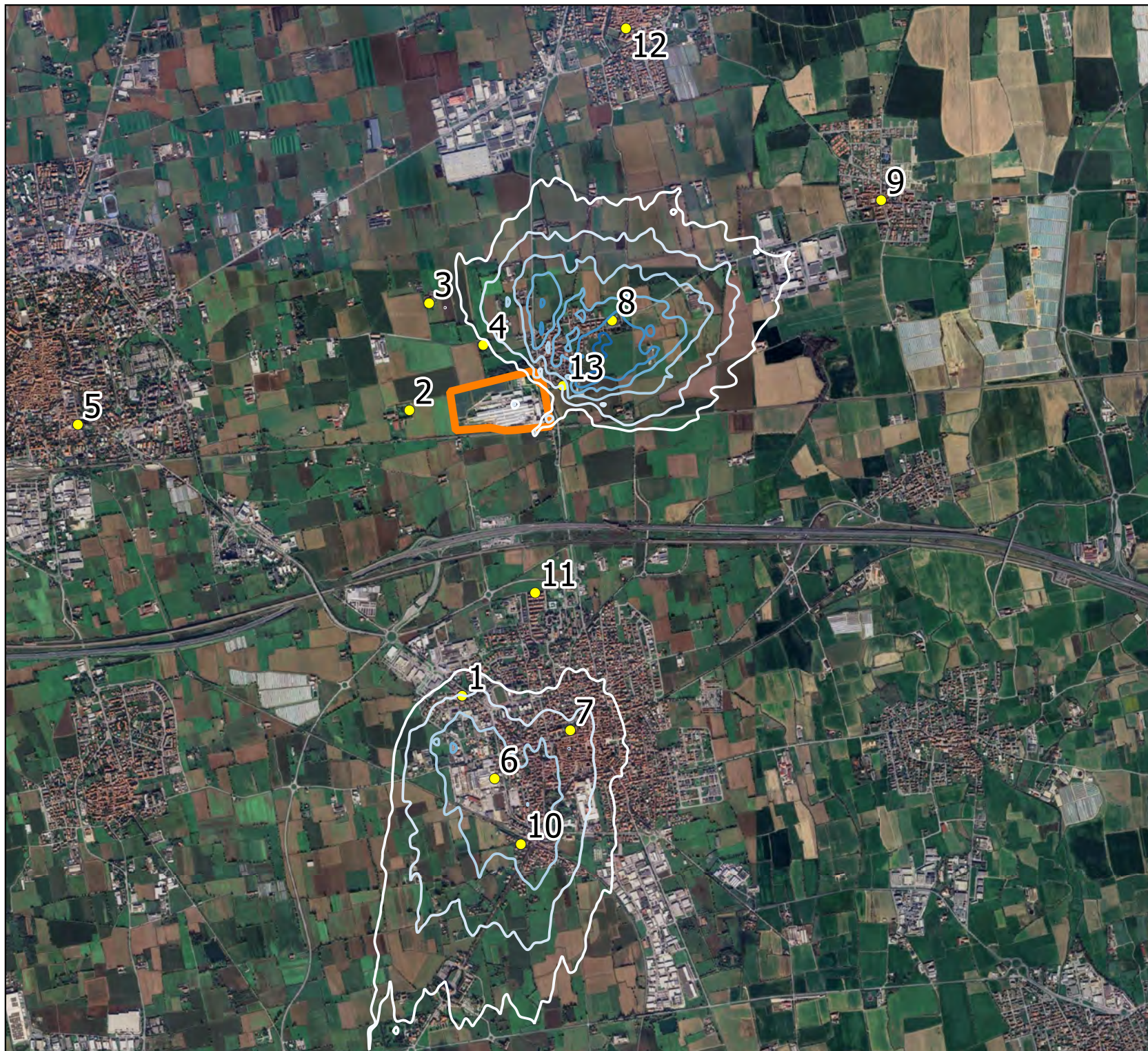
LEGENDA

Ricaduta 90.41 Percentile $\mu\text{g}/\text{m}^3$

0,65
0,75
0,85
0,95
1,05
1,15

Confini Aziendali



Recettori

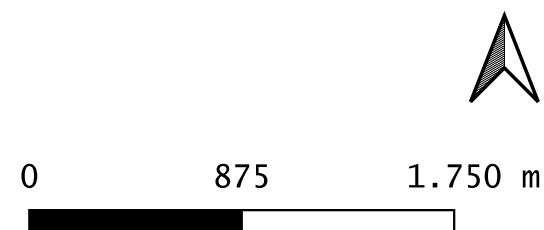


0 875 1.750 m

LEGENDA

Ricaduta Media Annuale $\mu\text{g}/\text{m}^3$

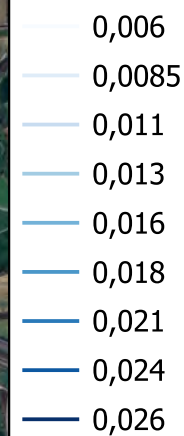
- 0,11
- 0,16
- 0,21
- 0,26
- 0,31
- 0,36
-  Confini Aziendali
-  Recettori



SILICE (SI)
STATO DI PROGETTO

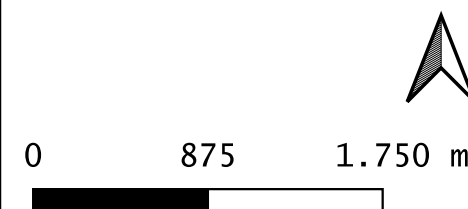
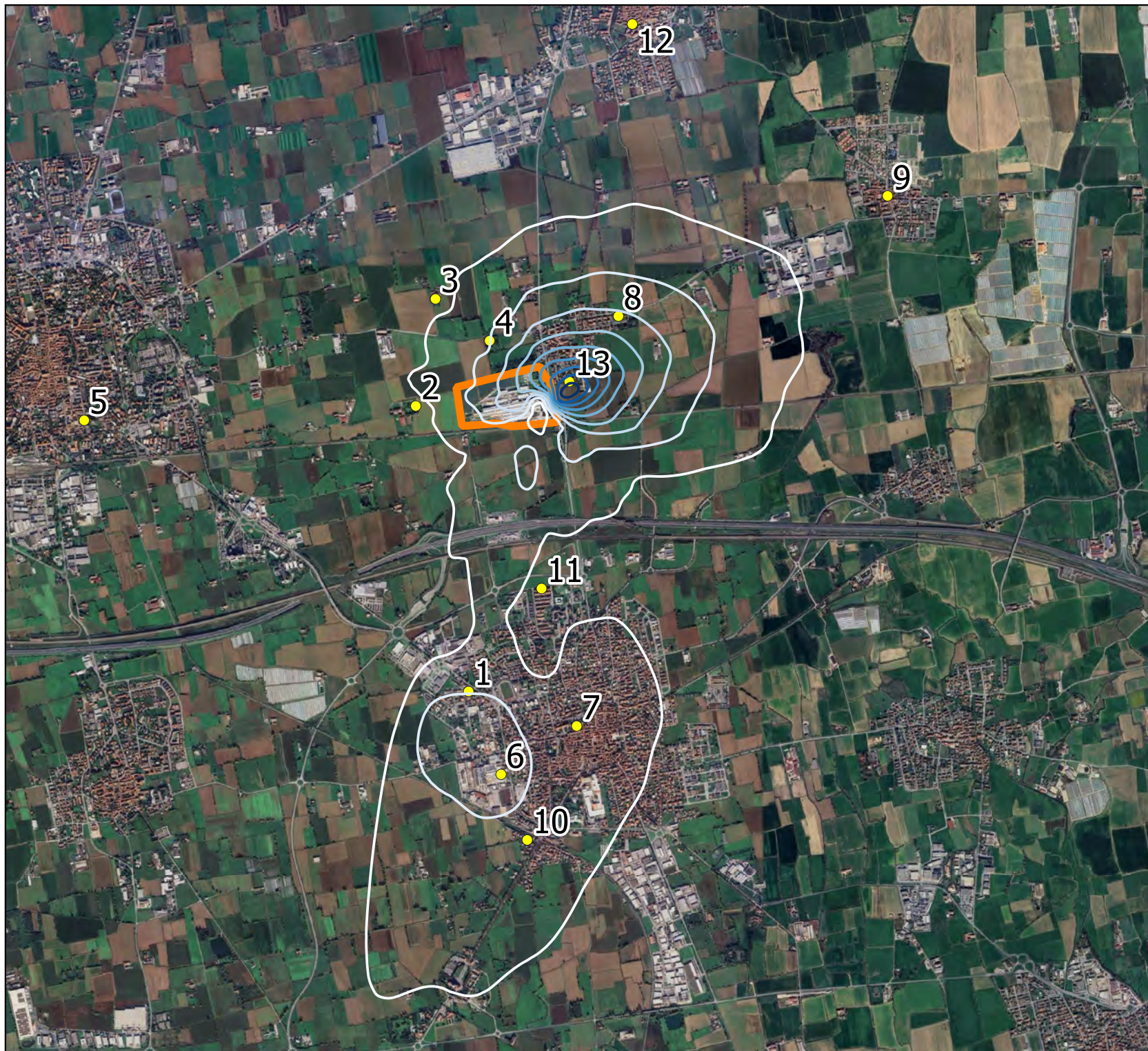
LEGENDA

Ricaduta Media Annuale $\mu\text{g}/\text{m}^3$



Confini Aziendali


Recettori

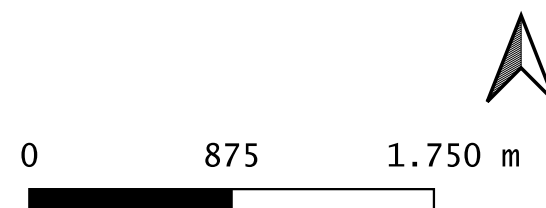
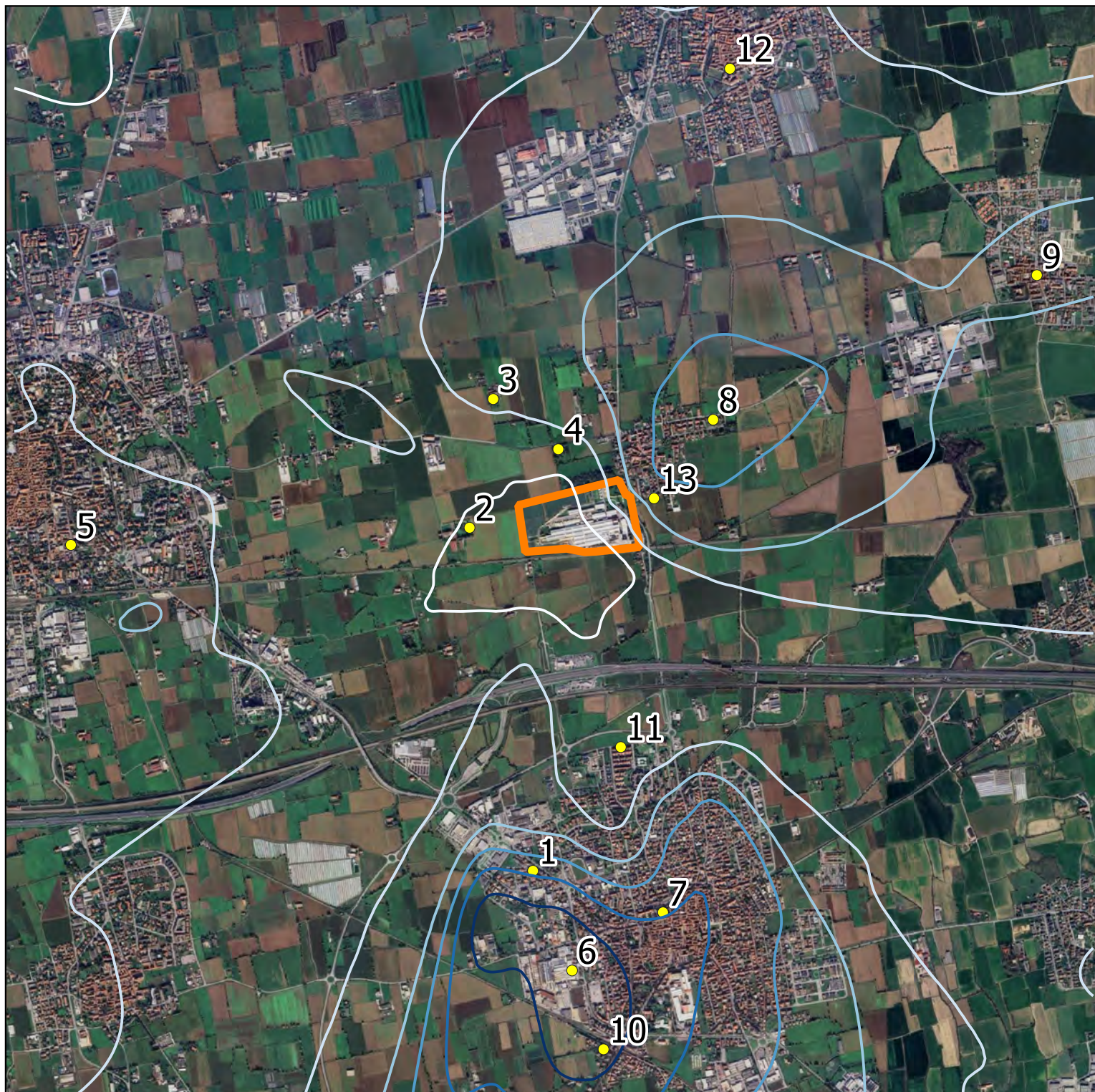


BIOSSIDO DI ZOLFO (SO₂)
STATO DI PROGETTO

LEGENDA

Ricaduta Media Annuale $\mu\text{g}/\text{m}^3$

- 0,15
- 0,25
- 0,35
- 0,45
- 0,55
- 0,65
-  Confini Aziendali
-  Recettori



BIOSSIDO DI ZOLFO (SO₂)
STATO DI PROGETTO


LEGENDA

Ricaduta 99.17 Percentile $\mu\text{g}/\text{m}^3$

- 11,00
- 13,00
- 15,00
- 17,00
-  Confini Aziendali
-  Recettori



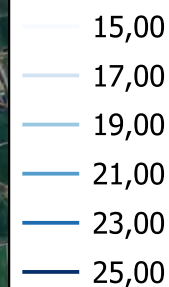
0 875 1.750 m



BIOSSIDO DI ZOLFO (SO₂)
STATO DI PROGETTO

LEGENDA

Ricaduta 99.73 Percentile µg/m³



Confini Aziendali

Recettori



AMMINE (TEA)
STATO DI FATTO

LEGENDA

Ricaduta Media Annuale $\mu\text{g}/\text{m}^3$

0,008

0,012

0,016

0,02

0,024

0,028

0,032

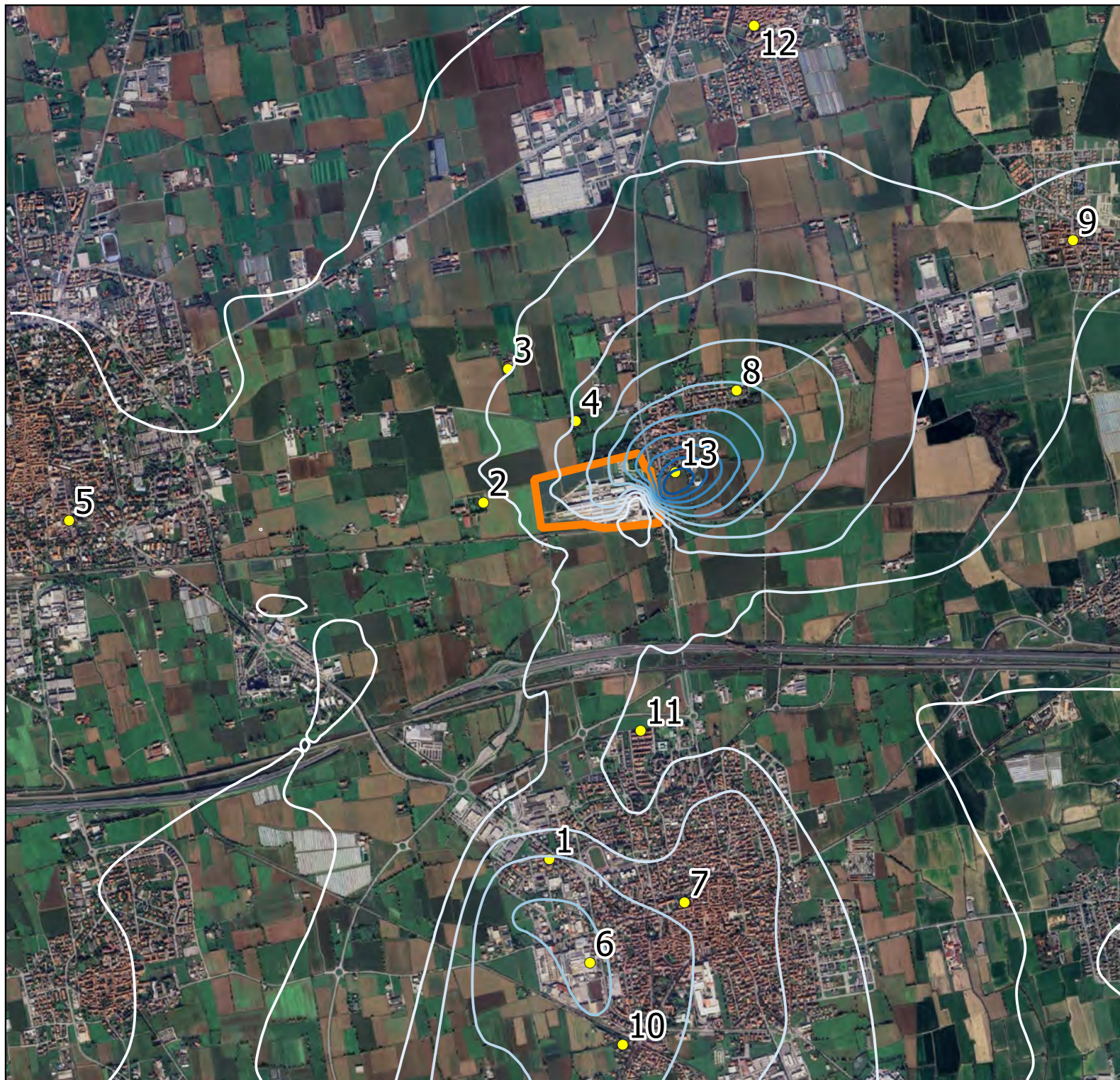
0,036

0,04

0,044

 Confini Aziendali

 Recettori



0 875 1.750 m

